

EWONA[®]

FOR PERFECT ACOUSTICS

- Ewona Acustica[®] Basic*
- Ewona Acustica[®] Excellence*
- Ewona Acustica[®] Premium*
- Ewona Acustica[®] 10*

PERFECT INDOOR CLIMATES FOR WORK AND REST



Ewona® acoustic panels are made from heat-bonded polyester fibres. The recycled fibre content of the material is 65% on average. Acoustic panels have been granted the right to use the Allergia- Iho- ja Astmaliitto's (Allergy, Dermatitis and Asthma Association) allergy symbol. The products have also been awarded M1 emission classification.

Acoustic panels do not trap moisture and, therefore, do not provide a breeding ground for mould or other microbes. The dust-free panels are easy to install, and working without protective equipment does not irritate the respiratory tracts or skin. Ewona acoustic panels will not subsequently release harmful particles into the indoor air.



Use

The Acustica® Premium panel options are: Premium+ 15 mm coated, Premium+ 20 mm coated, Premium 20 mm uncoated, and Premium Max 25 mm uncoated.

Acoustics is one of the most important aspects of any interior design, because acoustics has a significant impact on well-being, health and stamina. Ewona acoustic panels, favored by professionals, are easily moldable and suitable for most spaces. The acoustic panels are attached without painting and encapsulation, so e.g. making holes does not cause indoor air quality problems later on.

The Ewona® Acustica Premium suspended ceiling panels are thinner than other Acustica products, but still stiffer and denser as paneling goes, so it easily achieves the same absorption values as other Acustica products. These thin and dense panels can be used in spaces where a softer panel might not be a suitable option. The Ewona Acustica acoustic panels are particularly well suited for applications such as:

Places of use:

- Acoustic slat panel background panel
- Hospitals and nursing homes
- Schools and kindergartens
- Sports facilities
- Swimming halls
- Cinemas and concert halls
- Offices
- Industrial halls and production facilities
- Residential construction
- Many other facilities



Technical specifications

Density (kg/m ³)	110 (20 and 25 mm panels), 90 (15 mm panel)
Panel size (mm)	592 x 592, 592 x 1192 or customer's measurements
Thicknesses (mm)	15, 20 (Pr and Pr+) and 25 (Pr Max)
Colors: Uncoated Premium	White and black
Colors: Coated Premium+ - available by order (>200m ²)	White, black, grey, lichen, sand, brick, petrol and moss Available in Tikkurila, NCS and RAL Classic colour charts
Colors: Premium Max	Black, white, Arctic Nature patterns; Moose, reindeer, snowy owl and lynx
When installing onto a surface, you can use e.g. the following adhesives:	- 1022 Acoustic panel adhesive - 1050 fire-retardant adhesive - Fintex-Tetrakem 1021 panel and tile adhesive

EWONA ACUSTICA® PREMIUM



Coating

Ewona Acustica® Premium is available both uncoated and with an acoustic surface coating (Premium+). The coated Ewona Acustica® panels are intended for installation in suspended ceilings or for direct bonding to walls or ceilings, with the coloured surface facing outward. Images or graphics can be printed onto the panel surface. The coating can also be coloured to the desired shade.



Acoustic properties

Sound attenuation coefficient a_s , by octave band

Installation & product **125Hz** **250Hz** **500Hz** **1000Hz** **2000Hz** **4000Hz**

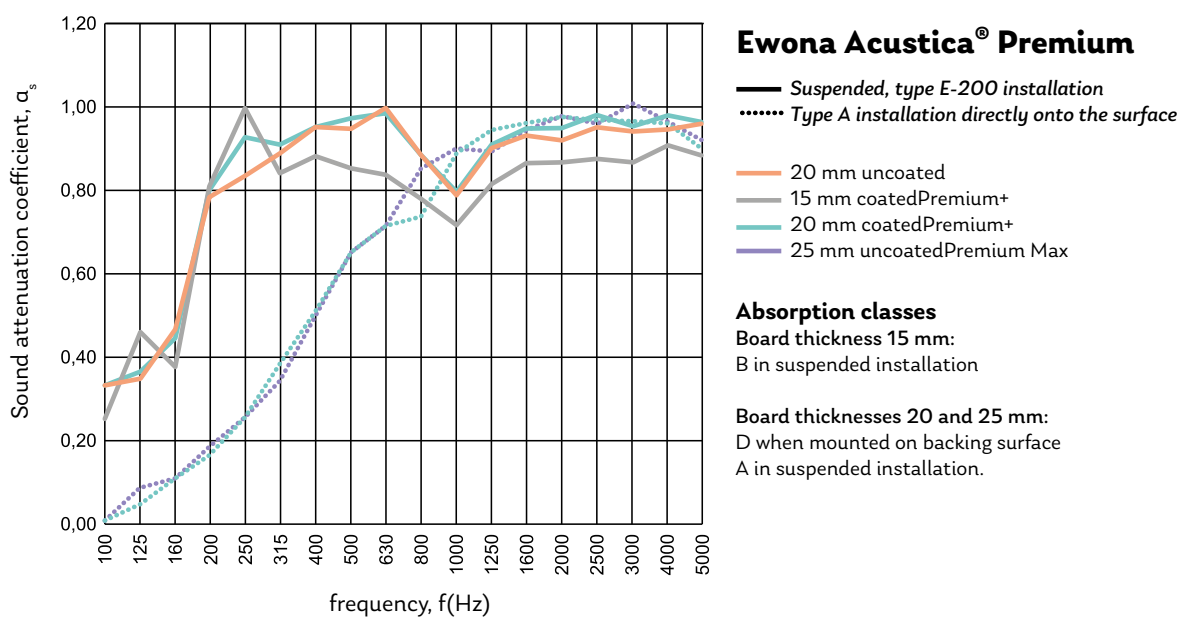
Suspended, type E-2000 installation

Premium+ 15	0,37	0,88	0,86	0,77	0,87	0,89
Premium 20	0,35	0,84	0,96	0,86	0,93	0,95
Premium+ 20	0,38	0,88	0,97	0,86	0,96	0,97

Type A installation directly onto the surface

Premium+ 20	0,06	0,27	0,62	0,86	0,97	0,94
Premium Max	0,08	0,26	0,62	0,88	0,96	0,97

Sound attenuation coefficient a_s , by one-third-octave band



Impact resistance

Impact resistant, class 1A, EN 13964



Cleaning

Clean Ewona Acustica® products by vacuuming or brushing. You can remove stuck-on dirt by wiping with a damp cloth. Do not use strong solvents, only water and a diluted detergent solution.



Fire classification

The fire rating of Ewona Acustica® acoustic panels is determined in accordance with EN 13501-1. The method of installation affects the fire class. If the panel will be coated with, for example, plasterboard, the fire class is determined by the plasterboard.

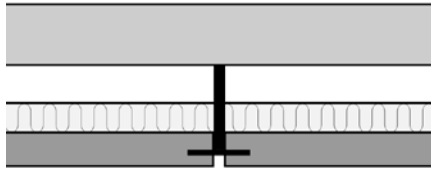
Installation method	Fire class
Suspended	Bs1d0



Installation

Ewona Acustica® acoustic panels are easy and pleasant to install. Acustica Premium, Premium+, and Premium Max are particularly well suited for installation in suspended ceilings where an air gap is left between the panel and the ceiling. However, they can also be used effectively for surface mounting, for example on walls.

Ewona® has created its own purpose-made tools for cutting and making holes, but you can use any kind of tools as long as they don't have serrated edges. For example, a foam cutter or similar is very suitable for cutting coated panels.



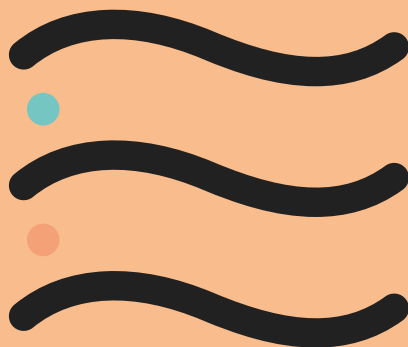
Acoustic suspended ceilings: E.g. coffered ceilings

Installation to the ceiling with e.g. a T-bar, intermediate and double corner mouldings (set between the wall and the panel). On coffered ceilings, acoustic panels should be installed on top of the coffering. The panels are installed with the coated side facing outwards.



Disposal of material

At the end of their life cycle, Ewona Acustica® acoustic panels can be sent for textile recycling.



Contact details:

info@ewona.fi
www.ewona.fi

Sales:

Tel. +358 20 790 2741
myynti@ewona.fi

Orders, production and deliveries (Contract customers):

Tel. +358 20 790 2740
tilaukset@ewona.fi

Locations:

Ewona Finland Oy
Ewonankatu 5 (PL 140)
FIN-38700 Rankaanpää

Ewona Finland Oy
Annalankankaantie 18
FIN-90830 Haukipudas

