

# EWONA

FOR PERFECT ACOUSTICS

- Ewona Acustica Basic*
- Ewona Acustica Excellence*
- Ewona Acustica Premium*
- Ewona Acustica 10*

# PERFECT INDOOR CLIMATES FOR WORK AND REST



Ewona acoustic panels are made from heat-bonded polyester fibres. The recycled fibre content of the material is 65% on average. Acoustic panels have been granted the right to use the Allergia- Iho- ja Astmaliitto's (Allergy, Dermatitis and Asthma Association) allergy symbol. The products have also been awarded M1 emission classification.

Acoustic panels do not trap moisture and, therefore, do not provide a breeding ground for mould or other microbes. The dust-free panels are easy to install, and working without protective equipment does not irritate the respiratory tracts or skin. Ewona acoustic panels will not subsequently release harmful particles into the indoor air.



## Use

Ewona Acustica 10 acoustic panels are intended for use as a backing for acoustic slat panels, for example. The products absorb sound and can be used to control echoes. They also provide thermal insulation.

Acoustics is one of the most important aspects of any interior design, because acoustics has a significant impact on well-being, health and stamina. The acoustic panels are attached without painting and encapsulation, so e.g. making holes does not cause indoor air quality problems later on.

The Acustica 10 is thinner and more compact than other Acustica products, so they have good absorption values. The thin and dense panel allows use in places where a softer panel is not the best option. Ewona Acustica acoustic panels are particularly suitable for several applications.

### Places of use

- Acoustic slat panel background panel
- Hospitals and nursing homes
- Schools and kindergartens
- Sports facilities
- Swimming halls
- Cinemas and concert halls
- Offices
- Industrial halls and production facilities
- Residential construction
- Many other facilities



## Technical specifications

Density (kg/m <sup>3</sup> )	156
Panel size (mm)	600 x 2400/2700/3000 or customer's measurements
Thicknesses (mm)	10
Uncoated	White and black
For example, the following adhesives can be used for mounting on the background:	- 1022 Acoustic panel adhesive - 1050 fire-retardant adhesive - Finntex-Tetrakem 1021 panel and tile adhesive

# EWONA ACUSTICA 10



## Coating

Ewona Acustica 10 is only available uncoated. The standard colours are white and black.



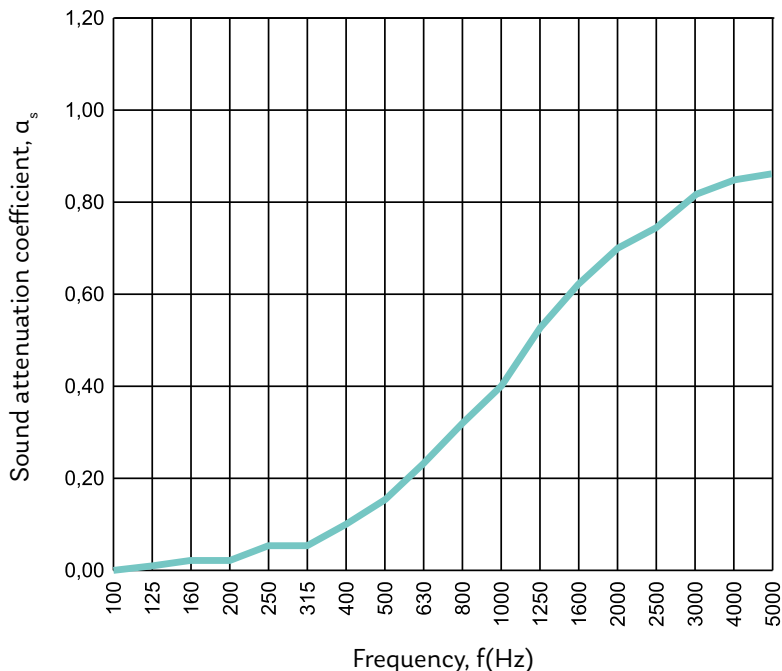
## Acoustic characteristics

Absorption class B in suspension mounting, or E when mounted to a background.

### Sound attenuation coefficient $a_s$ , by octave band

Installation & Product	125Hz	250Hz	500Hz	1000Hz	2000Hz	4000Hz
Type A installation directly onto the surface						
Uncoated	0,01	0,05	0,16	0,42	0,68	0,84

### Sound attenuation coefficient $a_s$



**Ewona Acustica 10**  
Type A installation  
directly onto the surface



## Impact resistance

Impact resistant, class 1A, EN 13964



## Cleaning

Clean Ewona Acustica products by vacuuming or brushing. You can remove stuck-on dirt by wiping with a damp cloth. Do not use strong solvents, only water and a diluted detergent solution..



## Fire classification

The fire rating of Ewona Acustica acoustic panels is determined in accordance with EN 13501-1. The method of installation affects the fire class. If the panel will be coated with, for example, plasterboard, the fire class is determined by the plasterboard.

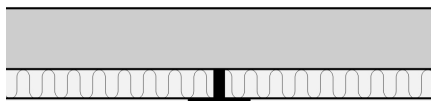
Installation method	Fire class
Suspended	Bs1d0



## Installation

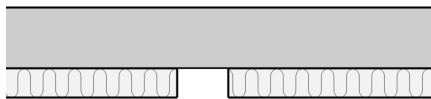
Ewona Acustica acoustic panels are easy and pleasant to install. The installation method will be determined by the application. The illustrations present different installation options. When fixed to the background, e.g. the following adhesives are suitable: Fintex Tetrakem 1022 Acoustic and installation adhesive and, if necessary Fintex Tetrakem 1050 fire-retardant adhesive.

Ewona has special tools for cutting and drilling holes, but you can use any kind of tools, as long as they are not serrated.



### 1. Mounting to intermediary moulding

Buffer seam installation directly onto the ceiling with e.g Fintex Tetrakem 1022 Acoustic and Installation Adhesive or Fintex Tetrakem 1050 adhesive. A plastic seam cover moulding should be installed between the panels.



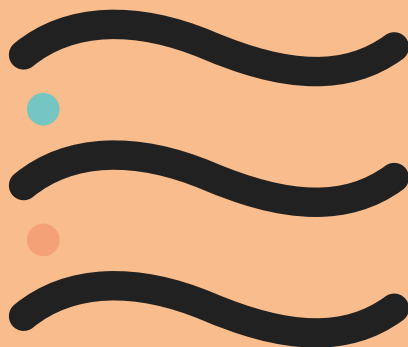
### 2. Open seam mounting

Installation directly on the ceiling with e.g Fintex Tetrakem 1022 Acoustic and Installation Adhesive or Fintex Tetrakem 1050 adhesive. Leave an open seam of 5–10 mm between the panels. Recommended only for spaces with high ceilings (gyms, swimming pools) for visual reasons, as the panel edges are not coated.



## Disposal of material

At the end of their life cycle, Ewona Acustica acoustic panels can be sent for textile recycling.



## Contact details:

info@ewona.fi  
www.ewona.fi

### Sales:

Tel. +358 20 790 2741  
myynti@ewona.fi

### Orders, production and deliveries (Contract customers):

Tel. +358 20 790 2740  
tilaukset@ewona.fi

### Locations:

Ewona Finland Oy  
Ewonankatu 5 (PL 140)  
FIN-38700 Rankaanpää

Ewona Finland Oy  
Annalankankaantie 18  
FIN-90830 Haukipudas

