

EWONA

FOR PERFECT INDOOR CLIMATES

Tools for using our products

PERFECT INDOOR CLIMATES FOR WORK AND REST



Ewona acoustic panels are made from heat-bonded polyester fibres. The recycled fibre content of the material is 65% on average. Acoustic panels have been granted the right to use the Allergia- Iho- ja Astmaliitto's (Allergy, Dermatitis and Asthma Association) allergy symbol. The products have also been awarded M1 emission classification.

Acoustic panels do not trap moisture and, therefore, do not provide a breeding ground for mould or other microbes. The dust-free panels are easy to install, and working without protective equipment does not irritate the respiratory tracts or skin. Ewona acoustic panels will not subsequently release harmful particles into the indoor air.



Special tools for cutting Ewona products

Ewona's products are easy to shape, as long as you use the right tools that are well sharpened. All Acustica, Wool and background acoustic products can be altered by using the same tools, regardless of their thickness and density.



Wool knife

Ewona's wool knife is ideal for cutting insulation materials. It allows you to make free-form shapes, gaps, and cuts. You can cut straight lines by simply using a straight wooden board or a similar object as a guide.

Move the knife back and forth to cut the panel with a slicing motion.

Sharpener

The knife comes with a Fiskars knife sharpener, which helps you give the blade a finish that will cut through the material most efficiently. In order for the material to cut neatly and efficiently, the blade should be kept sharp. When the knife is not in use, keep it in its protective case so that the blade does not become dull or damaged, or cause hazards.



Hole saws

Hole saws are blades that are suitable for a standard chuck, which allow you to make holes in the material that are just the right size. The blades are removable and can be replaced. That means that you'll only need one chuck for blades larger than 30 mm. There's a separate, narrower chuck for smaller blades.

The hole saws are used with a drill or a battery drill.

The 20–35 mm blades are suitable for making the feed through holes for electrical cables and water pipes, for example. Blades larger than that are also suitable for making the feed through holes for HVAC and sewage pipes.



Please note!

Serrated hole saw blades can't be used for cutting Ewona's wool products. The cutting tip must be even and sharp.

However, the chuck is a standard model and compatible with many other products meant for cutting materials.



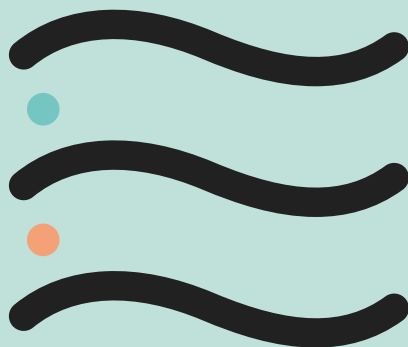
Foam rubber cutter

For example, the BOSCH GSG 300 foam rubber cutter is suitable for continuous professional use. The device can be used to cut Ewona products efficiently and to achieve high-quality cutting results.



Disposal of material

The waste material resulting from modifying Ewona Acustica acoustic panels can be brought to textile recycling.



Contact details:

info@ewona.fi
www.ewona.fi

Sales:

Tel. +358 20 790 2741
myynti@ewona.fi

Orders, production and deliveries
(Contract customers):

Tel. +358 20 790 2740
tilaukset@ewona.fi

Locations:

Ewona Finland Oy
Ewonankatu 5 (PL 140)
FIN-38700 Rankaanpää

Ewona Finland Oy
Annalankankaantie 18
FIN-90830 Haukipudas

