

# EWONA

FOR PERFECT INDOOR CLIMATES

- Ewona Acustica Basic*
- Ewona Acustica Excellence*
- Ewona Acustica Premium*
- Ewona Acustica 10*

# PERFECT INDOOR CLIMATES FOR WORK AND REST



Ewona acoustic panels are made from heat-bonded polyester fibres. The recycled fibre content of the material is 65% on average. Acoustic panels have been granted the right to use the Allergia- Iho- ja Astmaliitto's (Allergy, Dermatitis and Asthma Association) allergy symbol. The products have also been awarded M1 emission classification.

Acoustic panels do not trap moisture and, therefore, do not provide a breeding ground for mould or other microbes. The dust-free panels are easy to install, and working without protective equipment does not irritate the respiratory tracts or skin. Ewona acoustic panels will not subsequently release harmful particles into the indoor air.



## Use

Ewona acoustic panels are suitable for almost any construction when the goal is to create comfortable and healthy indoor climates. The products absorb sound and can be used to control echoes. They also provide thermal insulation.

Acoustics is one of the most important aspects of any interior design, because acoustics has a significant impact on well-being, health and stamina. Ewona acoustic panels, favored by professionals, are easily moldable and suitable for most spaces. The acoustic panels are attached without painting and encapsulation, so e.g. making holes does not cause indoor air quality problems later on.

The Acustica Premium suspended ceiling panels are thinner than other Acustica products, but still stiffer and denser as paneling goes, so it easily achieves the same absorption values as other Acustica products. These thin and dense panels can be used in spaces where a softer panel might not be a suitable option. The Ewona Acustica acoustic panels are particularly well suited for applications such as:

### Places of use:

- Acoustic slat panel background panel
- Hospitals and nursing homes
- Schools and kindergartens
- Sports facilities
- Swimming halls
- Cinemas and concert halls
- Offices
- Industrial halls and production facilities
- Residential construction
- Many other facilities



## Technical specifications

Density (kg/m <sup>3</sup> )	110
Panel size (mm)	592 x 592, 592 x 1192 or customer's measurements
Thicknesses (mm)	20
Uncoated Premium	White and black
Coated Premium+	White, black and grey
- available by order (>200m <sup>2</sup> )	Available in NCS and RAL Classic colour charts
When installing onto a surface, you can use e.g. the following adhesives:	- 1022 Acoustic panel adhesive - 1050 fire-retardant adhesive - Fintex-Tetrakem 1021 panel and tile adhesive

# EWONA ACUSTICA PREMIUM



## Coating

The Ewona Acustica Premium panels are available both uncoated and with acoustic coating. The standard colours are white, grey, and black; other colours are available on special order. The coated Ewona Acustica panels are designed to be glued to suspended ceilings, the ceiling, or the wall, with the coloured surface facing outwards. Pictures or graphical elements can be printed onto the panel coating. The coating can also be tinted a variety of colours.



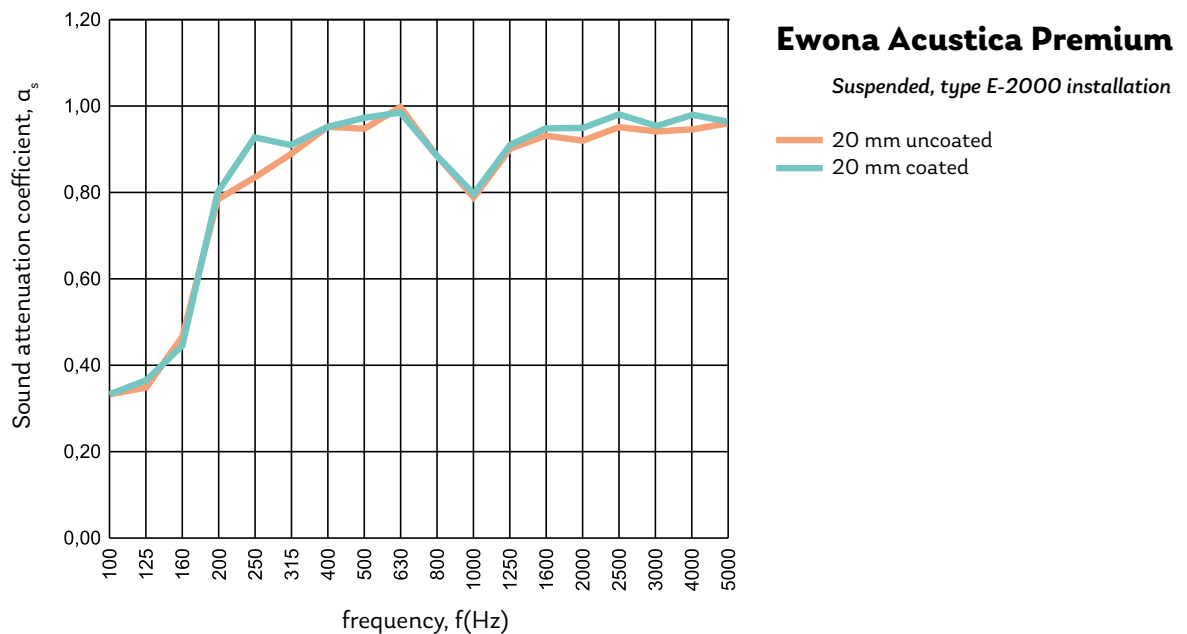
## Acoustic properties

Absorption class A for coated and uncoated panels.

### Sound attenuation coefficient $a_s$ , by octave band

Installation & product	125Hz	250Hz	500Hz	1000Hz	2000Hz	4000Hz
<i>Suspended, type E-2000 installation</i>						
Uncoated	0,35	0,84	0,96	0,86	0,93	0,95
Coated	0,38	0,88	0,97	0,86	0,96	0,97

### Sound attenuation coefficient $a_s$ , by one-third-octave band



## Impact resistance

Impact resistant, class 1A, EN 13964



## Cleaning

Clean Ewona Acustica products by vacuuming or brushing. You can remove stuck-on dirt by wiping with a damp cloth. Do not use strong solvents, only water and a diluted detergent solution.



## Fire classification

The fire rating of Ewona Acustica acoustic panels is determined in accordance with EN 13501-1. The method of installation affects the fire class. If the panel will be coated with, for example, plasterboard, the fire class is determined by the plasterboard.

Installation method	Fire class
---------------------	------------

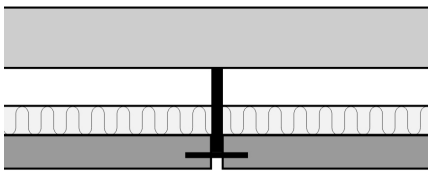
Suspended	Bs1d0
-----------	-------



## Installation

The Ewona Acustica acoustic panels are easy and comfortable to install. Acustica Premium and Premium+ are intended to be installed on the suspended ceiling so that there is some air space left between the panel and the ceiling.

Ewona has created its own purpose-made tools for cutting and making holes, but you can use any kind of tools as long as they don't have serrated edges. For example, a foam cutter or similar is very suitable for cutting coated panels.



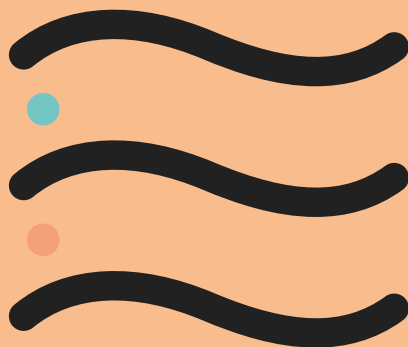
### Acoustic suspended ceilings: E.g. coffered ceilings

Installation to the ceiling with e.g. a T-bar, intermediate and double corner mouldings (set between the wall and the panel). On coffered ceilings, acoustic panels should be installed on top of the coffering. The panels are installed with the coated side facing outwards.



## Disposal of material

At the end of their life cycle, Ewona Acustica acoustic panels can be sent for textile recycling.



## Contact details:

info@ewona.fi  
www.ewona.fi

### Sales:

Tel. +358 20 790 2741  
myynti@ewona.fi

**Orders, production and deliveries**  
(Contract customers):

Tel. +358 20 790 2740  
tilaukset@ewona.fi

### Locations:

Ewona Finland Oy  
Ewonankatu 5 (PL 140)  
FIN-38700 Rankaanpää

Ewona Finland Oy  
Annalankankaantie 18  
FIN-90830 Haukipudas

